

INDIAN NOTICES TO MARINERS

EDITION NO. 07 DATED 01 APR 2016

(CONTAINS NOTICES 092 TO 101)



REACH US 24 x 7



incho@navy.gov.in
msis-incho@navy.gov.in



+91-135-2748373



National Hydrographic Office
107-A, Rajpur Road
Dehradun – 248001
INDIA



Joint Director of Hydrography
Maritime Safety Information Services
+91- 135 - 2746290-117

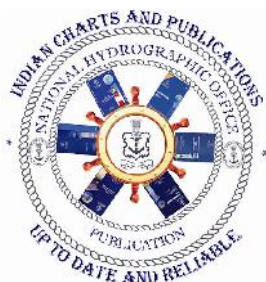
WWW
www.hydrobharat.gov.in

CONTENTS

Section No.	Title
I	List of Charts Affected
II	Permanent Notices
III	Temporary and Preliminary Notices
IV	Marine Information
V	NAVAREA VIII Warnings in force
VI	Corrections to Sailing Directions
VII	Corrections to List of Lights
VIII	Corrections to List of Radio Signals
IX	Reporting of Navigational Dangers

(PUBLISHED ON NHO WEBSITE ON 1ST & 16TH OF EVERY MONTH)

FEEDBACK: msis-incho@navy.gov.in



INSIST ON INDIAN CHARTS AND
PUBLICATIONS
Original, Authentic and Up-to-Date



© Govt. of India Copyright

No permission is required to make copies of these Notices. However, such copies are not to be commercially sold.

II

MARINER'S OBLIGATION AND A CHART MAKER'S PLEA

Observing changes at sea proactively and reporting them promptly to the concerned charting agency, is an obligation that all mariners owe to the entire maritime community towards SOLAS. Mariners are requested to notify the Chief Hydrographer to the Government of India at the above mentioned address/fax number/ E mail address immediately on discovering new or suspected dangers to navigation, changes/defects pertaining to navigational aids, and shortcomings in Indian charts/publications. The Hydrographic Note [Form IH – 102] is a convenient form to notify such changes. Specimen form is attached at Section IX with this notice. Also visit our website for downloading and filling up instructions for Hydrographic Note.

**Chief Hydrographer
to the Government of India**

WARNING AGAINST USE OF COUNTERFEIT PRODUCTS

All mariners are cautioned against the use of counterfeit copies of IN Charts and publications. Navigational Charts produced after 31 Oct 14 carry NHO crest as watermark on the reverse with backslip. Chart Agent's stamp is mandatory on all Charts.

Counterfeit products may have errors resulting in potential risks. The same are not approved by inspecting agencies and do not satisfy the carriage requirements of SOLAS chapter V.

Mariners are strongly advised not to use or encourage the use of counterfeit charts and publications. Failure to comply with the warning may invite legal action.

III

EXPLANATORY NOTES

Corrections to Charts and Publications. Section I comprises List of Charts affected by the notices contained in this edition. Whereas sections II and III contain information for correcting the charts and publications. Mariners should insist on corrected charts from their chart distributors/agents.

- (a) Geographical positions given are in the horizontal datum of the current edition of the chart, unless otherwise stated.
- (b) Bearings are true, reckoned clockwise from 000° to 359°. Bearings to lights are from seaward.
- (c) Symbols referred to, are those shown on the chart 5020 (INT 1).
- (d) Alterations to depth contours, deletion of depths to make way for new detail, etc; are not normally mentioned, unless they have some navigational significance.
- (e) Blocks and notes, if any, accompanying the Notices in Sections II and III are placed after Section IX.

Temporary and Preliminary Notices. These are indicated by (T) and (P) respectively after the Notice number and are placed in Section III. SI Nos. of those in force are published quarterly on 01 Jan, 01 Apr, 01 Jul and 01 Oct, and their text is published in Annual Edition of Indian Notices to Mariners. They should be inserted in pencil, by the user, on receipt.

Source of Information. A star preceding the number of a Notice indicates that the notice is promulgated by INHO based on original information received.

Sailing Directions. Corrections for the Sailing Directions (Pilots) are given in Section VI.

Lights. Corrections to Indian List of Lights are given in Section VII, where affected Light List number is quoted.

- (a) These corrections should be incorporated as per instructions given on page XI of the List of Lights.
- (b) Such correction notices to list of lights may be published in either an earlier or a later Edition of N to M than the Edition containing the Notice to the chart correction.
- (c) The range of a light given is its nominal range. Its geographical range is given in parenthesis only if it is less than the nominal range.
- (d) A star indicates that the corresponding field is to be amended and all stars indicate that new light is to be inserted.

Radio Signals. The corrections in Section VIII should be cut and pasted in the appropriate volume of the List of Radio Signals.

Radio Navigational Warnings.

- (a) These are broadcast as serially numbered NAVAREA warnings by the concerned NAVAREA coordinator through GMDSS and Area Radio Broadcasts.
- (b) They contain important information affecting navigational safety, which cannot await the publication of the next edition of N to M.
- (c) It should be borne in mind that they may be based on reports which cannot always be verified before promulgation.
- (d) It is therefore necessary to be selective, and promulgate only the more important warnings to avoid overloading users; the less important information is included in the forthcoming edition of N to M or the Chart/publication concerned.

IV

Laws and Regulations. While in the interest of the safety of shipping, the Hydrographic Office makes every endeavor to include in its publications details of the laws and regulations of all countries pertaining to navigation, it must be clearly understood: -

- (a) That no liability whatsoever can be accepted for failure to publish details of any particular law or regulation and
- (b) That publication of details of a law or regulation is solely for the safety and convenience of shipping and implies no recognition of the International validity of the law or regulation.

Correction of Charts and Publications by the Users. Notices to Mariners contain important information concerning safety of navigation at sea, hence, they should be used to keep the specified charts and publications up-to-date.

Reliance on Charts and Associated Publications. While every effort is made by the Hydrographic Office to ensure the accuracy of the information on Charts and Publications before they are published, it should be appreciated that it may not always be complete and up-to-date. The mariner must be the final judge for the reliance he can place on the information available, bearing in mind his particular circumstances, local pilotage guidance and judicious use of available navigational aids.

Use of Global Positioning System (WGS 84) positions.

- (a) The positions of hydrographic objects shown on some of the Indian charts and publications are in Everest datum. However, the positions of vessels obtained from Global Positioning System (GPS) are on World Geodetic System 1984 datum. There will always exist a difference in the position values obtained by visual fixing (Everest Datum) and GPS position (WGS 84 datum).
- (b) Wherever these differences have been ascertained, their average values are published as a Cautionary Note on the chart concerned, as shifts in Latitude and Longitude. Whilst plotting GPS positions on charts, the shift values as given on the chart must be applied, before making any assessment of the navigational situation vis-à-vis the other charted information.
- (c) These datum shift values are not uniform, particularly in areas off Andaman and Nicobar and Lakshadweep Islands, as these places are not linked to mainland network (Everest datum). Mariners are advised to use alternate source of position information such as Visual or Radar, particularly when closing the shore or navigating in the vicinity of dangers.

Source Data on Charts. All Indian charts contain specific information on their source of hydrographic data. In areas where the source data is very old, incomplete and less reliable, the mariner must use such charts with prudence. Mariner should always use the largest scale charts available for the area. Apart from being the most detailed, the larger scale charts are usually corrected first. Hydrographic information may be sparse on small scale charts. On such charts, a charted shoal may be in error as regards position, least depth and extent. Uncharted dangers may also exist, particularly in areas away from well-established routes. Mariners must exercise due caution.

Further Guidance. The Mariner's Hand Book (NP 100) gives full explanation on the use of charts and the type of information contained on charts. In their own interest, all users of charts should refer to it.

NEWLY PUBLISHED INDIAN CHARTS, ENC's AND PUBLICATION

1. The new Indian Charts that is available for mariners in the market is as follows:-

<i>Chart No.</i>	<i>Date of Publication</i>	<i>Title, Limits & Description</i>	<i>Scale</i>	<i>Folio</i>	<i>Price</i>
2054	15-12-2015	MADHWAD BAY <u>LIMITS</u> 20° 37'.00N; 70° 48'.00E. 20° 43'.30N; 70° 57'.20E.	25,000	2	Rs. 1870.00

2. The new edition Indian Chart that is available for mariners in the market is as follows:-

<i>Chart No.</i>	<i>Date of Publication</i>	<i>Title, Limits & Description</i>	<i>Scale</i>	<i>Folio</i>	<i>Price</i>
2518	15-02-2016	MANDA BAY <u>Limits</u> 02° 16'.30S; 40° 54'.30E. 02° 03'.00S; 41° 02'.90E.	25,000	1	Rs. 1870.00

3. The Indian Charts permanently withdrawn are as follows:-

<i>Chart No.</i>	<i>Date of Publication</i>	<i>Title</i>	<i>On Publication of New Chart/ Edition</i>	<i>Date of Publication</i>
2054	30-04-2010	MADHWAD BAY	2054	15-12-2015
2518	31-08-2014	MANDA BAY	2518	15-02-2016

4. The forthcoming Indian Charts are as follows:-

<i>Chart No</i>	<i>Title</i>	<i>Scale</i>	<i>Remarks</i>
33 (INT 755)	BAY OF BENGAL – SOUTHERN PORTION	15,00,000	New Chart
268 (INT 7353)	CENTRAL LAKSHADWEEP	3,00,000	New Chart
2010	KARWAR NAVAL HARBOUR	12,500	New Edition
2034 (INT 7349)	HAZIRA PORT	10,000	New Edition
2101 (INT 7347)	APPROCHES TO HAZIRA	37,500	New Chart
2108	ESSAR BULK TERMINAL	12,500	New Edition
2525	APPROACHES TO MANDA BAY	37,500	New Chart
3017	APPROACHES TO DHAMRA RIVER	50,000	New Chart
4013	APPROACHES TO LACAM HARBOUR	25,000	New Chart
	NEILL ISLAND PIER	10,000	
	LACAM HARBOUR	12,500	
	FUSILIER CHANNEL (NANCOWRY STRAIT)	25,000	

VI

Availability of ENC's

The complete folios of Official Indian ENC's are distributed worldwide through JEPPESEN MARINE (formerly C-MAP), UKHO and Norwegian Hydrographic Service. UKHO distributes Indian ENC's through the world wide network of their agents and distributors. Updates are also made available as per the existing policy of the distributor. Mariners and other ENC users may contact the under mentioned for further details:

United Kingdom Hydrographic Office Admiralty Way, Taunton, Somerset TA1 2DN, UK Tel: +44 (0) 1823 337900 Fax: +44 (0) 1823 330561, 1823 284077 Telex: 46274 Web site: www.hydro.gov.uk	M/s Jeppesen Norway AS Hovalandsveien 52 PO Box 212, N-4379, Egersund, Norway Ph: +47 51 464700 Mob: +91 93222 38542 Fax: +47 51 464701 Email: enc@jeppesen.com , info@c-map.co.no Website: www.jeppesen.com
M/s Primar Norwegian Hydrographic Service, Postbox 60, 4001 Stavanger Norway Telephone - +47 - 51 85 87 00 Fax - + 47 - 51 85 87 08 E-mail: data@ecc.no Website: - www.primar.org	M/s IIC Technologies Limited B-2-350/5/B-22, Road No. 3 Banjara Hills Hyderabad- 500 034 Tel: +91 4039144444 Fax: +91 4039144455 Email: somnath.marthi@iictechnologies.com Web: www.iictechnologies.com



VII TEMPORARY AND PRELIMINARY NOTICES

In Force 01 Apr 2016

(Former In Force List dated 01 Jan 2016 is cancelled)

Cancelled Notices	
Area	Notice No.
1	Nil.
2	078/15, 097/15, 190/15, 200/15, 201/15, 054/16, 056/16.
3	037/16, 057/16, 066/16.
4	Nil.

1. AFRICA EAST COAST, MADAGASCAR, RED SEA, ARABIA, PERSIAN GULF, PAKISTAN.

<u>Notice</u>	<u>Charts Affected</u>	<u>Description</u>
445/06	20 – 21 – 286 – 291 – 2088 – 2094 – 2095 – 2096 – 7703 (INT 703) – 7705 (INT 705) – 8009 – 8010	ARABIAN SEA – RED SEA – Submarine cables.
152/15	2514	INDIAN OCEAN – MAURITIUS – Port Louis – Buoy.

2. INDIA WEST COAST – INDIAN OCEAN.

<u>Notice</u>	<u>Charts Affected</u>	<u>Description</u>
152/11	2081 – 2100	INDIA – WEST COAST – Pipavav Port – Dredging.
182/12	21 – 22 (INT 752) – 292 (INT 7021) – 2093	INDIA – ARABIAN SEA – Argo Floats.
038/13	2065	INDIA – WEST COAST – Port Dabhol – Buoy.
065/14	23– 31– 33 – 7070(INT 70) – 7071 (INT 71) –7072 (INT 72) –7073(INT 73) – 7702 (INT 702) –7703(INT 703) –7706(INT 706) – 7707(INT 707) –7708(INT 708)	INDIA OCEAN – Data Buoys.
099/14	21– 203 (INT 7319) – 2017	INDIA – WEST COAST – Gulf of Kachchh – Eastern Portion – Buoys.
042/15	22 (INT 752) – 214– 293 (INT 7022) – 2022 (INT 7345)	INDIA – WEST COAST – Approaches to Mormugao – Unlit Vessel.
066/15	271 – 251 (INT 7318) – 203 (INT 7319) – 2031 (INT 7326) – 2068 – 2013 (INT 7324)	INDIA – WEST COAST – Gulf of Kachchh – Port of Okha – Buoys.
087/15	273	INDIAN OCEAN – Kadmat Island to Ihavandiffulu Atoll –Buoy.
098/15	21– 208 – 209 – 254 (INT 7331) – 292 (INT 7021) – 2039– 2102	INDIA – WEST COAST– Bhavnagar Port – Anchorage.
099/15	215 – 216 – 2008 – 2010	INDIA – WEST COAST – Karwar Naval Harbour – Buoy.
109/15	2043 – 2042 – 2046	INDIA – WEST COAST – Vengurla Anchorage – Buoy.

VIII

2. INDIA WEST COAST – INDIAN OCEAN. (Continued).

120/15	21 – 291 – 292 – 253 – 254 – 203 – 207 – 2081 – 2068 – 2079 – 2100 – 2106	INDIA – WEST COAST – Gulf of Kachchh – Racon.
121/15	21 – 22 – 292 – 293 – 255 – 211 – 2016	INDIA – WEST COAST – Inner Approaches to Mumbai – Foul.
127/15	2040	INDIA – WEST COAST – Porbandar Port – Jetty.
128/15	21 – 22 – 292 (INT 7021) – 293 (INT 7022) – 255 (INT 7334) – 211 – 2016 (INT 7336) – 2015 (INT 7337)	INDIA – WEST COAST – Port of Mumbai – Racon.
135/15	2008 – 2010	INDIA – WEST COAST – Karwar – Buoy.
157/15	259 (INT 7356) – 260 (INT 7362) – 220 – 2029 (INT 7358) – 2004 (INT 7359).	INDIA – WEST COAST – Kochi Harbour – Buoy.
158/15	260 (INT 7362) – 261 – 222 – 223 – 2012	INDIA – WEST COAST – Vizhinjam Anchorage – Sea Cage Farm.
163/15	21 – 22 (INT 752) – 211 – 255 (INT 7334) – 292 (INT 7021) – 293 (INT 7022) – 2015 (INT 7337) – 2016 (INT 7336) – 2076 (INT 7338)	INDIA – WEST COAST – Mumbai Port – Buoys. Wreck.
183/15	262 (INT 7365) – 224 – 2075 (INT 7366)	INDIA – WEST COAST – Tuticorin Harbour – Breakwater.
186/15	268 (INT 7353) – 273	INDIA – Central Lakshadweep – Light.
035/16	22 – 272 – 258 (INT 7348) – 218 – 2025	INDIA – WEST COAST – Azhikkal Anchorage – Racon.
046/16	202 – 203 (INT 7319) – 2031 (INT 7326) – 2068	INDIA – WEST COAST – Gulf of Kachchh Deep Water Route – Buoy.
047/16	214 – 2022 (INT 7345) – 2078 (INT 7346)	INDIA – WEST COAST – Port of Mormugao – Dredging.
055/16	21 – 292 (INT 7021) – 254 (INT 7331)	INDIA – WEST COAST – Approaches to Gulf of Khambhat – Survey Operation.
074/16	2079 (INT 7329) – 2106	INDIA – WEST COAST – Mundra Port – Construction Work.
075/16	2016 (INT 7336) – 2015 (INT 7337)	INDIA – WEST COAST – Port of Mumbai – Buoys.
076/16	22 (INT 752) – 32 (INT 754) – 259 (INT 7356) – 260 (INT 7362) – 221	INDIA – WEST COAST – Alleppey to Quilon – Light.
077/16	22 (INT 752)	India – West Coast – Lakshadweep Sea – Survey Operation.
091/16	21 – 22 (INT 752) – 23 – 292 (INT 7021) – 293 (INT 7022) – 273 – 268 (INT 7353) – 257 (INT 7343) – 214 – 2047 – 2022 (INT 7345) – 2020 – 7703 (INT 703) – 7705 (INT 705)	INDIA – WEST COAST – Arabian Sea – Data Buoys. Tsunami Buoy.
097/16	22 (INT 752) – 293 (INT 7022) – 272 – 258 (INT 7348) – 217 – 2052 (INT 7350)	INDIA – WEST COAST – Approaches to Port of New Mangalore – Buoy.
098/16	21 – 22 (INT 752) – 292 (INT 7021) – 293 (INT 7022) – 272 – 257 (INT 7343) – 259 (INT 7356) – 214 – 221	INDIA – WEST COAST – Arabian Sea – ADCP Moorings.
099/16	21 – 22 – 292 (INT 7021) – 293 (INT 7022) – 254 (INT 7331) – 257 (INT) – 210 – 209 7343) – 214 – 2022 (INT 7345) – 2020.	INDIA – WEST COAST – RACON.

IX

3. INDIA EAST COAST – ANDAMAN NICOBAR, SRI LANKA, MYANMAR.

<u>Notice</u>	<u>Charts Affected</u>	<u>Description</u>
237/10	406 – 4010	ANDAMAN SEA – INDIA – Little Andaman Islands – Hut Bay – Light.
094/12	33 – 41 (INT 757) – 402 – 403 – 404 – 405 – 406 – 407 – 408 – 409 – 471 – 472 (INT 7032) – 473 (INT 7031) – 4016 – 4035	INDIA – ANDAMAN SEA – Fish Aggregating Devices.
183/12	31 – 32 (INT 754) – 33 – 354 (INT 7408)	INDIA – BAY OF BENGAL – Argo Floats.
212/12	3034	INDIA – EAST COAST – Krishnapatnam Port – Port Development. Dredging.
225/12	31 – 321 – 322 – 371 – 3020	BAY OF BENGAL – MYANMAR COAST – Combermere Bay to Cheduba Strait – Platform.
159/13	31 – 41 (INT 757) – 409 – 471 – 472 – 4035 – 4039	INDIA – ANDAMAN SEA – Nicobar Island – Campbell Bay – Jetty.
195/13	352 (INT 7416) – 3005	INDIA – EAST COAST – Gopalpur Port – Breakwater. Wrecks. Onshore Installation.
208/14	41 (INT 757) – 410 – 411 – 451 – 452 – 4019	Myanmar – Yangon River – Buoys.
068/15	31 – 32 (INT 754) – 391 – 354 (INT 7408) – 308 – 3002 (INT 7410) – 3012 (INT 7411)	INDIA – EAST COAST – Visakhapatnam Harbour – Buoy.
143/15	31 – 32 (INT 754) – 33 – 41 (INT 757) – 292 (INT 7021) – 404 – 405 – 472 (INT 7032) – 473 (INT 7031) – 7706 (INT 706) – 7707 (INT 707)	INDIA – EAST COAST – Bay of Bengal – Data Buoy. Tsunami Buoy.
184/15	41 (INT 757)	ANDAMAN SEA – Myanmar – Wellhead Platform – Intrafield Pipeline.
185/15	408 – 409 – 472 – 4039 – 4182 – 4205	INDIA – Andaman Sea – Lights.
191/15	31 – 32 (INT 754) – 33 – 308 – 352 (INT 7416) – 354 (INT 7408) – 355 (INT 7405) – 357 (INT 7397) – 391	INDIA – EAST COAST – Bay of Bengal – ADCP Moorings.
192/15	31 – 41 (INT 757) – 371 – 324 – 325	INDIA – BAY OF BENGAL – Preparis North Channel to Rangoon River – Drilling Operation.
193/15	31 – 41 (INT 757) – 371 – 451 – 325	INDIA – BAY OF BENGAL – Sittwe (Akyab) to Preparis Island – Survey Operation.
194/15	31 – 41 (INT 757) – 371 – 451 – 325	INDIA – BAY OF BENGAL – Sittwe (Akyab) to Preparis Island – Survey Operation.
195/15	31 – 33 – 41 (INT 757) – 325 – 371 – 404 (INT 7031)	INDIA – BAY OF BENGAL – Sittwe (Akyab) to Preparis Island – Survey Operation.
036/16	308 – 3002 (INT 7410) – 3012 (INT 7411)	INDIA – EAST COAST – Visakhapatnam Harbour – Buoy.
038/16	31 – 7071 (INT 71) – 7073 (INT 73) – 7706 (INT 706)	INDIA – BAY OF BENGAL – Survey Operation.
058/16	391 – 355 (INT 7405)	INDIA – EAST COAST – Ramaypatnam to Sacramento Shoal – Survey Operation.
059/16	31 – 41 (INT 757) – 371	INDIA – ANDAMAN SEA – Drilling Operation.

X

3. INDIA EAST COAST – ANDAMAN NICOBAR, SRI LANKA, MYANMAR. (Continued).

078/16	31 – 32 (INT 754) – 33 – 391 – 356 (INT 7400) – 3034	INDIA – EAST COAST – Krishnapatnam Port – RACON.
079/16	391 – 356 (INT 7400).	INDIA – EAST COAST – Chennai (Madras) to Ramayapatnam – Light.
080/16	31 – 41 (INT 757) – 371	INDIA – Bay of Bengal – Sittwe (Akyab) to Preparis Island – Survey Operation.
081/16	41 (INT 757)	ANDAMAN SEA – Survey Operation.
089/16	31 – 371 – 361 – 320	INDIA – Bay of Bengal – Naff River to Sittwe (Akyab) – Survey Operation.
090/16	31 – 41 (INT 757) – 371	INDIA – Bay of Bengal – Sittwe (Akyab) to Preparis Island – Survey Operation.
100/16	31 – 391 – 354 (INT 7408) – 308	INDIA – EAST COAST – Outer Approaches to Vishakhapatnam – Light.
101/16	31 – 352 (INT 7416) – 3041 – 3010 (INT 7418)	INDIA – EAST COAST – Paradip Port – RACON.

4. MALACCA STRAIT, SINGAPORE STRAIT AND SUMATERA

383/03	33 – 41 (INT 757)	INDONESIA – Sumatera – North and Northwest Coasts – Restricted area.
377/07	7508 (INT 508)	INDONESIA – Sumatera – Pulau Belitung West Coast – Tanjungpandan to Jawa North Coast – Pakis – Submarine cable.
238/10	41 (INT 757) – 471	INDONESIA – Sumatera – North West Coast – Pulau Bunta – Lights.

SECTION – I

The list of charts affected by the Notices 092 to 101 contained in this edition is as follows:

CHART NUMBER	FOLIO NO.	NOTICE NO.
21	2	098 (T), 099 (T)
22 (INT 752)	3	095, 097 (P), 098 (T), 099 (T)
23	1	098 (T)
31	5	096, 100 (T), 101 (T)
32 (INT 754)	5	098 (T)
207	2	094
209	2	099 (T)
210	2	099 (T)
214	3	098 (T), 099 (T)
217	3	097 (P)
221	3	098 (T)
253 (INT 7328)	2	098 (T)
254 (INT 7331)	2	094, 099 (T)
257 (INT 7343)	3	098 (T), 098 (T), 099 (T)
258 (INT 7348)	3	097 (P)
259 (INT 7356)	3	098 (T)
261	4	098 (T)
263 (INT 7383)	4	098 (T)
272	4	097 (P), 098 (T)
273	4	095
292 (INT 7021)	2	098 (T), 099 (T)
293 (INT 7022)	3	097 (P), 098 (T), 099 (T)
308	5	100 (T)
352 (INT 7416)	5	101 (T)
354 (INT 7408)	5	100 (T)
371	7	096
391	5	100 (T)
2020	3	099 (T)
2022 (INT 7345)	3	099 (T)
2052 (INT 7350)	3	097 (P)
2060	2	092
2068	2	093
3010 (INT 7418)	5	101 (T)
3041	5	101 (T)

SECTION – II

PERMANENT NOTICES

***092 (07/16) INDIA – WEST COAST – Approaches to Salaya and Pathfinder Inlet; Plan of Pathfinder Inlet – Port Development.**

Source: NHO.

Chart 2060 [previous update 077/15]

Insert accompanying block showing port developments centered on: 22° 27′.00N., 69° 39′.90E.

Chart 2060 (Plan) [previous update 077/15]

Insert accompanying block showing port developments centered on: 22° 26′.65N., 69° 40′.23E.

***093 (07/16) INDIA – WEST COAST – Gulf of Kachchh – Gulf of Kachchh Deep Water Route – Port Development.**

Source: NHO.

Chart 2068 [previous update 077/15]

Insert accompanying block showing port developments centered on: 22° 26′.45N., 69° 40′.60E.

***094 (07/16) INDIA – WEST COAST – Diu Head to Gopnath Point – Buoy.**

Source: DLL Jamnagar.

Chart 254 (INT 7331) [previous update 083/16]

Delete  Q(9)15s 20° 37′.97N., 71° 38′.21E.

Chart 207 [previous update 123/15]

Delete  Q(9)15s 20° 38′.00N., 71° 38′.20E.

***095 (07/16) ARABIAN AND LAKSHADWEEP SEAS – India and Maldives – Kadmat Island to Ihavandiffulu Atoll – Wreck.**

Source: MRCC Mumbai.

Chart 22 (INT 752) [previous update 081/15]

Insert  PA 10° 57′.30N., 74° 37′.00E.

Chart 273 [previous update 040/14]

Insert  PA 10° 57′.30N., 74° 37′.00E.

***096 (07/16) BAY OF BENGAL & ANDAMAN SEA – Coast of Burma – Sittwe (Akyab) to Prepara Island – Well.**

Source: Myanmar Hydrographic Centre.

Chart 31 [previous update 199/15]


Insert  Well 19° 52′.05N., 91° 54′.03E.

Chart 371 [previous update 088/16]

Insert  Well 19° 52′.05N., 91° 54′.03E.

SECTION – III

TEMPORARY AND PRELIMINARY NOTICES

***097 (P) (07/16) INDIA – WEST COAST – Approaches to Port of New Mangalore – Buoy.**

Source: DLL Jamnagar

- Withdrawal of below mentioned wreck marking buoy by MV Sagardeep - II is in progress.

Sl No.	Name of wreck marking buoy	Position
(a)	Asian forest	12°47'.91N., 074°44'.42E
- Mariners are advised to navigate with caution in the vicinity and contact local port authorities for more information.
- Position is referred to WGS84 datum.
- Former INM 097(P)/15 is cancelled.**

Charts affected – 22 (INT 752) – 293 (INT 7022) – 272 – 258 (INT 7348) – 217 – 2052 (INT 7350).

***098(T) (07/16) INDIA – WEST COAST – Arabian Sea – ADCP Moorings.**

Source: NIO Goa.

- Underwater Acoustic Doppler Current Profiler (ADCP) mooring deployed by National Institute of Oceanography, Goa in following positions:–

ADCP Mooring	Positions		Depth (in metres)	Charts affected
*OMD7	20° 00'.73N	69° 14'.32E	175, 345, 845	21 – 292 (INT 7021) – 253 (INT 7328)
*OGD11	15° 09'.93N	72° 44'.67E	190, 407, 907	22 (INT 752) – 293 (INT 7022) – 214
*OGS11	15° 13'.96N	72° 58'.82E	162	22 (INT 752) – 293 (INT 7022) – 257 (INT 7343) – 214
*OBD3	13° 36'.09N	73° 14'.29E	160, 329, 830	22 (INT 752) – 293 (INT 7022) – 272 – 257 (INT 7343)
*OBS5	13° 52'.63N	73° 24'.57E	165	22 (INT 752) – 293 (INT 7022) – 272 – 257 (INT 7343)
*OKD8	09° 02'.90N	75° 26'.14E	188, 368, 868	22 (INT 752) – 259 (INT 7356) – 221
*KKD6	06° 57'.71N	77° 23'.61E	173, 348, 848	22 (INT 752) – 23 – 32 (INT 754) – 261 – 263 (INT 7383)

* Indicates new or revised entries.

- All positions referred to WGS 84 datum.
- Vessels operating in vicinity are to maintain a safe distance from moorings and exercise caution.
- Former INM 190(T)/15 is cancelled.**

***099 (T) (07/16) INDIA – WEST COAST – RACON.**

Source: DLL Mumbai.

- Following lighthouse RACON are reported inoperative.

Sl No.	Name	Position	RACON Code	Charts Affected
(a)	Umargam Light	20° 11'.80N., 72° 44'.94E.	'M'	21 – 292 (INT 7021) – 254 (INT 7331) – 210 – 209.
(b)	Aguada Light	15° 29'.52N., 73° 46'.36E.	'O'	22 – 293 (INT 7022) – 257 (INT 7343) – 214 – 2022 (INT 7345) – 2020.

- Mariners are advised to contact local port authorities for more information.

***100 (T) (07/16) INDIA – EAST COAST – Outer Approaches to Vishakhapatnam – Light.**

Source: DLL Visakhapatnam.

- Santapally light in position 18° 03'.95N., 83° 38'.25E. unlit.
- Mariners are advised to exercise caution.

Charts affected – 31 – 391 – 354 (INT 7408) – 308.

***101 (T) (07/16) INDIA – EAST COAST – Paradip Port – RACON.**

Source: DLL Kolkata.

1. Following lighthouse RACON is reported inoperative.

SI No.	Name	Position	RACON Code	Charts Affected
(a)	Paradip	20° 15′.32N., 86° 39′.38E.	‘K’	31 – 352 (INT 7416) – 3041 – 3010 (INT 7418).

2. Mariners are advised to contact local port authorities for more information.



SECTION – IV **MARINE INFORMATION**

1. NAVTEX TRANSMISSION

MSI Promulgation by NAVTEX Stations at Mumbai and Chennai are temporarily out of operation.

(Source – DG Shipping)

2. MISIDENTIFYING FISHING BOATS AS PIRATE SKIFFS

All merchant vessels entering Indian EEZ are advised that dense fishing activity may be encountered off West Coast of India. Fishing is generally carried out by mechanized boats and single hull boats with outboard motors carrying 4-5 crew using long lines upto 50 NM from coast. The vessels traversing the nets are likely to be approached by fishing boats for safeguarding nets and lines and should not be mistaken as skiffs and PAG's. Masters of vessels to report any suspicious activity of fishing vessels immediately to MRCC (Mumbai) on telephone +91-22-24388065, 24316558, Email: - indsar@vsnl.net, or icgmrc_mumbai@mtnl.net . Any suspicious activity of skiffs / boats to be photographed if possible. Merchant vessels with armed guards on board are to report presence of guards to Indian Navy/Coast Guard while transiting Indian EEZ.

(Source - NAVAREA VIII Warning 100/12)

3. DISPLAY ANOMALIES IN ECDIS

(a) Mariners are advised that the International Hydrographic Organization (IHO) check data set shows that some ECDIS systems fail to display some significant underwater features in the standard display mode. The use of this check data set, issued through ENC service providers and available from the IHO website www.iho.int, to check the operation of ECDIS is strongly recommended. JRC has confirmed that certain versions of JRC ECDIS fail to display some types of wreck and obstructions, including stranded wrecks, in any display mode.

Where JRC ECDIS is in use, paper charts should be the primary means of navigation until the ECDIS has been proved to operate correctly. See www.jrc.co.jp/eng/product/marine/whatsnew/20120313/index.html for further information.

(b) Some Electronic Chart Display and Information Systems (ECDIS) may exhibit operating anomalies. The International Maritime Organization's (IMO) circular SN.1/CIRC.312 pages /imodocs.aspx (registration required) lists identified anomalies, Their characteristics and remedial advice. Mariners are reminded that they should access the International Hydrographic Organization (IHO) data presentation and performance check (DPPC) dataset (news links of <http://www.iho.int/srv1>) and ensure that all installed ECDIS units are checked.

(Source - NAVAREA VIII Warning 141/12 & 529/12)

4. SAFETY FAIRWAYS, RECOMMENDED ROUTES, TRAFFIC SEPARATION SCHEME

The Director General Shipping has established Safety fairways, recommended routes and traffic separation scheme (TSS) in restricted Indian waters including the offshore development area to enhance safety of navigation. The details of coordinates for the above have been published in the fortnightly Indian Notices to Mariners Edition No 14 of 2008 (16th July 2008).

(a) **Safety Fairways:** An area within which permits are not granted for the erection of oil or gas related structures. The use of a safety fairway is not usually mandatory, but is recommended. Safety fairways have been promulgated in and round offshore development area in Arabian Sea up to the Exclusive Economic Zone (EEZ) due to increased weather related marine accidents and dense traffic. These are mandatory for all Indian ships and vessels transiting through the ODA and recommendatory for all foreign flag ships and vessels irrespective of size.

(b) Recommended routes have been established along the coast of Gujarat. These are to assist mariners to navigate safely in order to represent the best routes for crossing traffic and to minimize head-on

encounters in vicinity of Oilfield Development Areas and regulate coastal traffic. Mariners are advised to keep 1 to 2 miles starboard of the shown routes consistent with Rules of the Road.

(c) Traffic Separation Schemes (TSS). The TSS off Mumbai harbour is mandatory for all Indian and foreign flag ships and vessels entering and leaving Mumbai harbour and Jawaharlal Nehru Port Trust (JNPT)/ Nhava-Sheva harbour irrespective of size.

5. **GAGAN SYSTEM COMMISSIONED FOR OPERATIONS**

The GAGAN System is now commissioned for safety of life, civil aviation, and en- route operations in addition to all other non-aviation applications. The GAGAN signal is being broadcasted through GSAT-8 and GSAT-10 with PRN127 & 128 respectively.

All the GPS users are requested to enable SBAS functionality in their receivers, configure it to receive PRN-127& 128 and avail the benefits of GAGAN in terms of increased accuracy and reliability. There may be occasional signal outages due to system up-gradation activities.

6. **USAGE OF THURAYA/ IRRIDUM AND SATELLITE PHONE**

The use of Thuraya, Iridium and other such satellite phone is banned in India under Sec 6 of Indian Wireless Act and Sec 20 of Indian Telegraph Act. It is intimated to all shipping companies/ shipping agents that use of Thuraya/ Iridium and other such satellite phones are banned in Indian waters and seafarers should not use the same.

Satellite phones can be used only after no objections certificate issued by department of telecommunication (DOT) on a case to case basis. The shipping agents should mandatorily intimate the details of person carrying Thuraya and the particulars of Thuraya, Iridium and other such sets in pre arrival notification on security (PANS).

The unauthorized holders of Thuraya/ Iridium and other such Satellite phones can be prosecuted under Sec 6 of Indian Wireless Act and Sec 20 of Indian Telegraph Act.

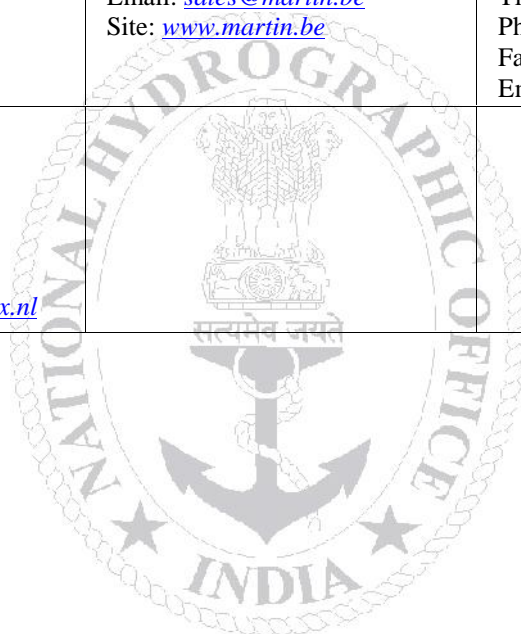
7. **CAUTIONARY NOTE**

There is a finite amount of lag between publication of large and small scale Indian Nautical Charts. To avoid uncertainty the mariners are advised to use large scale charts for coastal navigation wherever applicable and available. In addition, mariners are to refer large scale charts in conjunction with small scale charts in areas where both overlap during both planning and conduct of passage.

Distribution of Indian Paper Charts and Nautical Publications

Indian Nautical Charts and Publications from National Hydrographic Office, India are now available globally. Details of overseas chart agents are as follows:-

JEPPESEN MARINE Jeppesen Norway AS P.O. 212, N-4379, Egersund, Norway Ph: 0047 51 464700 Fax: 0047 51 464701 Email: info@c-map.no Site: www.c-map.no	C-Map US Commercial 133 Falmouth Road, Building 2, Postal Code: 02649, Mashpee, MA, America Ph: +1 (508) 477 8010 Fax: +1 (508) 539 4381 Email: info@c-map.com	C-Map (UK) Ltd. Systems House Delta Business Park Salterns Lane, Fareham, PO16 0QS, United Kingdom, Ph: +44 (0) 1329 517777 Fax: +44 (0) 1329 517778 Email: info@c-map.co.uk
Mari-Sys Pte Ltd. 20 Ayer Rajah Crescent, 08-21, SE 139964, Republic of Singapore Ph: +65 6776 1898 Email: info@mari-sys.com	Bogerd Martin NV, Oude Leeuwenrui 37 2000 Antwerp, Belgium Ph: +32 (3) 2134170 Fax: +32 (3) 2326167 Email: sales@martin.be Site: www.martin.be	Bogerd Martin Tianjin (China Branch) 2-B101 FTZ Hi-Tech Development Centre 131 Haibin 9 Road 300461 Tianjin China Ph: +86 22 257 62 721 Fax: +86 22 257 62 722 Email: charts-tj@martincn.com
C-Map Holland Paleiskade 100 PO Box 7 1781 AR Den Helder, Holland Ph: +31 223 616 700 E Mail: CorMallie cor@chartworx.nl		



List of Indian Chart Agents

M/s OSA Books and Periodicals R-246, Greater Kailash –I, New Delhi - 110 048 Tel/Fax: 011-46557337, Mob: 9971093992 Email: rpani246@gmail.com	M/s Sterling Book House 181, Dr. DN Road, Fort, Mumbai – 400 001 Tel: 91-22-22612521, Fax: 91-22-22623551 Email : sbh@vsnl.com
M/s Global Charts & Nav. Aids Pvt. Limited 1A, Goa Mansion, Ground Floor, 58, Dr. Sunderlal Bahl Path (Goa Street), Fort, Mumbai - 400 001 Tel: 91-22-22626318, 22626380 Fax: 91-22-22621488 Email: sales@globalcharts.in Web: www.globalcharts.com.sg	EW Liner Charts & Publication (India) 2/524, Sundeep Road, Chinna Neelangarai, Chennai 600041 Tele/Fax : +91-44-24490668 Mob No : +91-9003245348 Email: maritimeindia@airtelmail.in
M/s C & C Marine Combine 25 Bank Street, 1 st Floor, Mumbai - 400 023 Tel: 91-22- 22660525, 22661937, 22672143 Fax: 91-22-22670896 Email: ccmarine@vsnl.com, sales@ccmarine.in	Gujarat Pipavav Port Limited PO – Ucchaiya, Dist – Amereli, Gujarat – 365 560 Tele: +91- 2794302400 Fax: 302413 (Only for Pipavav Port Chart)
M/s SVR Chart Agencies Door No.50-81-35/6, Santhipuram, Seetammampeta, Visakhapatnam – 530 016 Tele Fax: 0891-2799471, Cell: +91 9440132553, 9849120988, 9885308200 Email : mahalakshmitravels@hotmail.com	M/s Jeppesen India Pvt. Ltd 505, Raheja Arcade, Sector 11 CBD, Belapur, Navi Mumbai – 400 614 Tel: +91 22 6510 3668, Fax: +91 22 55939504 Mob: +9322238542 Email: RajShekhar.Chakravorty@jeppesen.com, info@jeppesen.com Website: www.jeppesen.com
M/s JM Maritime Services 24/24C Kavarana Building, Ground Floor, Wadi Bunder, P.D. Mellow Road, Mumbai – 400 009 Tel: +91 22 23736956, Fax: 022 - 23725083 Cell: +91 9820788357 Email : jmms@mtnl.net.in, charts@mtnl.net.in	M/s Global Marine Infratech Pvt. Ltd. Siksha Sandan, Ground Floor, ND-7, Bhubaneswar – 751015 Tel: +91-674-2550599, Fax: +91-674-2551899 Cell:- +919937064299 Email: ashishkantha@gmiindia.in Web: www.gmiindia.in
Lift o Marine Paper / Digital Charts Allen's Mansion, Flat C6 Nungi Station Road Kolkata – 700 140, IN Tel: +91 9836972027 / 8902228463 Fax: 033 24924283 Email: sankar@liftmarine.org Web: www.liftmarine.org	M/s L. R. Marine Services 301, 3rd Floor, Birya House, 265, Perin Nariman Street, Fort, Mumbai - 400 001. Tel: +91-22-2269 1535, Fax: +91-22-6635 9148 Cell No: +91 8108926880/ +91 98214 60258 Email: lrcharts@gmail.com, lrmarine@live.com
M/s Engineering Logistics Executive Multi Services Eloms Charts, Door No: 61-4-45-A/4, Prakash Nagar Malkapuram Visakhapatnam – 530 011 Mob: +91 9133871827 Email: sales@elomscharts.in Web: www.elomscharts.in	M/s IIC Technologies Limited B-2-350/5/B-22, Road No. 3, Banjara Hills, Hyderabad – 500 034 Tel: +91 4039144444 Fax: +91 4039144455 Email: somnath.marthi@iictechnologies.com Web: www.iictechnologies.com
M/s Aatash Computer & Communications Pvt. Ltd. 213, Devarc Commercial Complex Nr. Iscom Circle (above Woodland Showroom) S. G. Highway Ahmedabad – 380 015 Mob: +91 7926923982 Email: jyoti@aatash.com, zubin@aatash.com	M/s Zenith Surveys (I) Pvt. Ltd. Lakhani's Plam View, First Floor, Office No. 889, Sector 48, Nerul, Navi Mumbai – 400 706 Tel/ Fax: +91-22- 27708011 Email: zenithsurveys703@gmail.com, nyvmane@yahoo.com Web: www.zenithsurvey.com

SECTION – V

NAVAREA – VIII WARNINGS IN FORCE

1. For details of NAVAREA limits and organisation/coordination, please refer to Notice No. 12 of the Special edition of Indian Notice to Mariners – 2012.

2. NAVAREA VIII Warnings in force as on 31 Mar 16:

2015 SERIES – 124 287 334 386 439 445 486 498 582 616 633 646 672 735

2016 SERIES – 027 031 063 064 173 188 190 195 204 207 213 216 221 224 225 226 227 228 229
231 232 236 237 238 240 241 242 243 244

3. NAVAREA VIII Warnings issued during the period from 16 Mar to 31 Mar 16 (both dates inclusive) are as tabulated below:–

202.	India West Coast – Okha. Charts 21 203 2068 INT 71. Firing by Naval Coast Battery scheduled on 21 Mar 16 from 0530-0730 UTC.
2.	Danger area extending seaward up to 12 NM within bearing 300 to 020 from 22-28.04N 069-04.99E. Safe flying Ht 13 KM.
3.	Cancel this MSG 210830 UTC Mar 16.
203.	Lakshadweep Sea – off Cape Comorin. Charts 22 263 INT 71. Man overboard 14 Mar 16 from fishing vessel in vicinity of 07-32N 077-46E.
204.	India West Coast – off Okha to Navibandar. Charts 21 252 INT 71. Firing from Kathiawar range scheduled daily till 08 Apr 16 from 0230-0930 UTC in danger area bounded by 22-12.00N 068-36.33E, 21-15.50N 069-04.00E, 21-09.00N 069-40.00E, 21-15.50N 069-42.50E, 22-05.75N 068-49.00E.
2.	Cancel this MSG 081030 UTC Apr 16.
205.	India East Coast – West Central Bay of Bengal. Charts 32 33 INT 71. Firing by CG aircraft scheduled daily from 22-31 Mar 16 from 0130- 1130 UTC in danger area bounded by 13-30N 082-00E, 14-30N 082-00E, 14-30N 082-40E, 13-30N 082-40E. Safe flying Ht 2 KM.
2.	Cancel this MSG 311230 UTC Mar 16.
206.	India West Coast. Charts 271 292 INT 71. Rig list correct at 171002 UTC Mar 16.
	ABAN ICE 22-29.58N 068-07.56E
	ABAN III 19-29.98N 071-16.28E
	ABAN IV 19-30.93N 071-21.44E
	CE THORNTON 19-40.10N 072-18.89E
	DISCOVERY-1 18-57.12N 072-10.81E
	DYNAMIC VISION 22-18.69N 068-34.46E
	DEEP SEA FORTUNE 19-40.14N 072-00.34E
	DEEP SEA FOSSIL 19-17.71N 071-24.33E
	FG MCCLINTOCK 18-58.31N 071-29.99E
	GREAT DRILL CHAAYA 18-38.79N 072-14.94E
	GREAT DRILL CHETNA 21-37.38N 068-26.55E
	GREAT DRILL CHAARU 20-07.04N 071-49.35E
	HARVEY H WARD 18-48.40N 072-20.00E
	JINDAL STAR 19-28.40N 071-12.60E NEW
	JT ANGEL 22-52.20N 068-28.80E
	MERCURY FOCUS 21-18.12N 072-31.64E
	NOBLE ED HOLT 19-01.90N 071-32.57E
	PARAGON L-786 19-29.88N 071-24.70E
	PARAGON M 1161 19-28.98N 071-19.63E
	PARAMESWARA 20-04.98N 071-59.67E
	RON TAPMEYAR 19-08.72N 072-07.03E
	SAGAR GAURAV 20-20.45N 071-15.40E
	SAGAR SHAKTI 19-37.86N 071-23.28E
	SAGAR JYOTI 19-07.74N 072-02.61E
	SAGAR KIRAN 18-44.50N 072-19.63E
	SAGAR LAXMI 20-58.00N 071-33.00E
	SAGAR PRAGATI 20-58.00N 071-33.00E
	SAGAR UDAY 19-06.54N 071-22.35E
	TRIDENT II 18-50.59N 072-13.00E
	TRIDENT XII 19-31.69N 071-16.51E NEW
	VICTORY DRILLER 18-31.95N 072-15.23E
	VIRTUE-I 19-26.06N 071-24.26E
	VALIANT DRILLER 19-33.13N 071-16.35E
2.	Wide berth requested.
3.	Cancel NAVAREA VIII 194.

207.	India East Coast – off Vishakhapatnam. Charts 308 INT 706. Santapally Lt (18-04N 083-38E) unlit.
208.	East Central Bay of Bengal. Charts 31 371 INT 706. SV Cable Innovator progressing cable and repeater installation till 21 Mar 16 at 16-49.14N 094-20.96E and 17.34.0N 89-48.354E. 2. Cancel this MSG 211830 UTC Mar 16.
209.	India West Coast – off Mumbai ODA. Charts 255 INT 71. Man over board reported from MV Meenakshi 132130 UTC Mar 16 in vicinity 19-10N 071-46E.
210.	India West Coast – Narmada Channel. Charts 207 INT 71. Buoy 4 (20-44.8N 072-02.7E) relaid. Buoy 7 (20-56.4N 072-06.9E), 8 (20-59N 072-07E), 9 (21-02.5N 072-09.2E) unlit. 2. Cancel NAVAREA 107.
211.	NAVAREA VIII Warnings in Force as on 18 Mar16 2015 Series – 124 287 334 386 439 445 486 498 582 616 633 646 672 735 2016 Series – 027 031 063 064 134 140 145 147 150 152 158 169 173 175 179 185 186 188 190 192 195 198 200 202 203 204 205 206 207 208 209 211 212 (a) NAVAREA VIII warnings less than 42 days promulgated via SafetyNet. (b) Text of NAVAREA VIII warnings inforce including those which no longer broadcast available in www.hydrobharat.nic.in . (c) Cancel this MSG 251000 UTC Mar 16.
212.	India West Coast – Narmada Channel. Charts 207 INT 71. Buoy 9(21-02.5N 072-09.2E) retrieved. Buoy 7 and 8 unlit. 2. Cancel NAVAREA 210.
213.	Bay of Bengal – off Bassein River. Charts 371 INT 706. MV Ramform Titan progressing seismic survey till 18 Apr 16 in area bounded by 16-44.95N 092-08.86E, 16-45.05N 093-20.86E, 17-08.49N 093-20.85E, 17-08.40N 093-40.67E, 16-57.31N 093-40.64E 16-48.25N 093-49.09E, 16-48.24N 093-57.79E, 16-44.95N 093-57.77E, 16-37.87N 093-57.78E, 16-37.89N 093-50.21E, 16-31.05N 093-46.53E, 16-21.37N 093-43.74E, 16-06.05N 093-38.72E, 16-00.11N 093-38.69E, 16-00.04N 092-08.86E, 16-44.95N 092-08.86E. Vessel towing 18 cables 7.1 KM long. 2. Wide berth requested. 3. Cancel this MSG 181830 UTC Apr 16.
214.	India West Coast – Lakshadweep Sea. Charts 22 273 INT 71. MSV Selvamatha reported sunk in position 10-57.3N 074-37E. All crew rescued.
215.	India East Coast – off Gopalpur. Charts 31 353 INT 706. BPTA flight scheduled daily till 26 Mar 16 from 0130 - 0730 and 0830 - 1230 UTC in area bounded by 19-17.67N 084-55.21E, 19-10.75N 084-47.38E, 18-56.03N 084-52.64E, 19-12.33N 085-14.92E. Safe flying Ht 1.5 KM. 2. Cancel this MSG 261330 UTC Mar 16.
216.	India West Coast – NE Lakshadweep Sea. Charts 22 273 INT 71. MSV Selvamatha reported sunk in position 10-57.3N 074-37E. 2. Cancel NAVAREA VIII MSG 214.
217.	Cancel NAVAREA VIII 134 150 158 185 186 and this MSG. INTM 083 084 088 089(T) 090(T) refers.
218.	Central Andaman Sea. Charts 41 INT 706. MV Polarcus Asima progressing seismic survey till 20 Apr 16 in area bounded by 10-26.3N 095-33.1E, 11-03.3N 096-08.6E, 10-16.0N 095-43.6E, 10-53.0N 096-19.2E. 2. Wide berth of 06 NM requested. 3. Cancel this MSG 201830 UTC Apr 16.
219.	India East Coast – off Gopalpur. Charts 31 352 353 INT 706. Army air firing scheduled daily from 29-31 Mar 16 from 0130 - 0730 and 0830 - 1230 UTC in danger area bounded by (a) 19-14.6N 084-53.7E (b) 19-07.39N 085-35.94E (c) 18-33.61N 084-53.74E and arc of 41 NM radius joining point b and c. Safe flying Ht 6.1 KM. 2. Cancel this MSG 311330 UTC Mar 16.
220.	India West Coast – N Lakshadweep and Arabian Sea. Charts 22 257 293 INT 71. Firing by Naval ships scheduled on 29 Mar 16 from 0030-1030 UTC in danger area bounded by 13-56.20N 074-13.60E, 14-07.20N 074-13.60E, 14-07.20N 074-25.07E, 13-55.20N 074-25.07E and 30 mar 16 from 0030-1430 UTC in area bounded by 17-22N 070-41E, 16-40N 071-18E, 15-56N 070-24E, 16-38N 069-47E. 2. Cancel this MSG 301530 UTC Mar 16.
221.	India East Coast – NW Bay of Bengal. Charts 31 353 354 INT 71. Launch of experimental flight vehicle scheduled from ITR from 31 Mar to 02 Apr 16 from 0730-1130 UTC in danger zone bounded by 17-11.74N 083-29.07E, 19-57.95N 089-14.57E, 21-12.90N 088-26.23E, 17-27.81N 083-18.19E. 2. No over flight and shipping permitted in danger zone. 3. Cancel this MSG 021230 UTC Apr 16.
222.	India East Coast – Central Bay of Bengal. Charts 31 32 INT 706. Missile firing practice scheduled on 29 and 30 Mar 16 by Naval ships from 0030 – 0700 UTC in danger area bounded by 15-30N 082-25E, 16-14N 084-00E, 14-23N 086-00E, 13-47N 086-00E, 12-54N 084-36E, 13-52N 082-00E, 14-36N 082-01E and aircrafts from 0715-1200 UTC in danger area bounded by 15-30N 082-25E, 16-55N 084-40E, 14-25N 086-55E, 13-47N 086-00E, 12-54N 084-36E, 13-52N 082-00E, 14-36N 082-01E. Safe flying Ht 15 KM. 2. Cancel this MSG 301300 UTC Mar 16.

223. India West Coast – off Trivandrum. Charts 22 INT 71. RV MGS Sagar progressing survey till 30 Mar 16 in area bounded by 08-58.40N 074-42.66E, 08-58.80N 075-59.79E, 07-00.08N 077-26.74E, 07-50.18N 074-43.38E, 07-51.60N 074-56.23E, 06-57.79N 075-23.24E.
2. Wide berth requested.
3. Cancel this MSG 301830 UTC Mar 16.
224. India West Coast – Gulf of Khambhat. Charts 208 INT 71. Sultanpur buoy (21-16.3N 072-11.6 E) retrieved. Narmada channel buoy 8(20-59N 072-07E) retrieved and 7 unlit.
2. Cancel NAVAREA VIII 212.
225. Indian Ocean – Tanzania. Chart INT 70 BA 663. Wave rider buoys carrying radar reflectors and amber Lt Fl(5) 20 sec deployed in position 08-22.06S 040-02.05E, 10-04.64S 040-25.94E and oceanographic sub surface moorings deployed 08-09.20S 039-41.28E, 08-10.67S 039-44.53E, 08-54.12S 040-07.50E, 10-17.33S 040-25.74E, 10-15.63S 040-27.79E, 09-47.47S 040-24.45E, 08-22.50S 039-56.34E, 08-08.30S 039-37.59E, 10-06.17S 040-14.97E, 09-39.15S 040-13.62E, 09-16.96S 040-12.27E, 09-50.46S 040-00.01E.
226. India West Coast – Koteswar. Charts 201 INT 71. Light Fl (2) 15s 46.5 metres 17.8 M covering sector 270 to 090 established on Koteswar Lt (23-40.44N 068-31.64E).
227. India East Coast – off Ravva ODA. Charts 355 INT 706. SV Teja progressing geo technical survey till 30 Apr 16 in area bounded by 16-24.64N 082-01.58E, 16-19.93N 082-06.19E, 16-19.63N 082-05.89E, 16-24.51N 092-00.55E.
2. Wide berth of 04 NM requested.
228. India West Coast – Mumbai ODA. Charts 253 INT 71. Well platform jacket (65x30x29 m) reported sunk in position 19-39.55N 071-17.59E.
2. Caution advised.
229. Bay of Bengal – off Myanmar. Charts 371 INT 706. MV Ramform Titan progressing seismic survey from 27 Mar to 30 Apr 16 in area bounded by 17-14.82N 093-09.58E, 17-14.72N 093-50.83E, 16-58.93N 093-50.76E, 16-58.85N 094-09.11E, 16-39.56N 094-09.00E, 16-39.68N 093-09.58E, 17-14.81N 093-09.58E.
2. 4 KM clearance from survey area requested.
3. Cancel this MSG 301830 UTC Apr 16.
230. Cancel NAVAREA VIII 203 209 and this MSG.
231. NAVAREA VIII Warnings in Force as on 25 Mar16 2015 Series – 124 287 334 386 439 445 486 498 582 616 633 646 672 735 2016 Series – 027 031 063 064 140 145 147 152 173 188 190 192 195 198 204 205 206 207 213 215 216 218 219 220 221 222 223 224 225 226 227 228 229 230 (a) Navarea VIII warnings less than 42 days promulgated via SafetyNet. (b) Text of NAVAREA VIII warnings inforce including those which no longer broadcast available in www.hydrobharat.nic.in. (c) Cancel this MSG 011000 UTC Apr 16.
232. India West Coast – Kochi. Charts 22 220 2029 INT 71. firing by naval coast battery scheduled on DATE TIME (UTC) 01 Apr 16 0900-1200 05 Apr 0900-1200 and 1230-1430 08 Apr 0900-1200 12 Apr 0900-1200 15 Apr 0900-1200 19 Apr 0900-1200 and 1230-1430 22 Apr 0900-1200 26 Apr 0900-1200 29 Apr 0900-1200 2. Danger area bounded by 09-57.5N 075-59.5E, 09-57.7N 076-14.2E, 09-44.0N 076-17.5E, 09-42.5N 076-09.5E. 3. Safe flying Ht 10 KM. 4. Cancel this MSG 291300 UTC Apr 16.
233. India East Coast – off Balasore. Charts 31 301 351 INT 706. Launch of experimental flight vehicle scheduled from ITR on DATE TIME (UTC) 29 Mar 16 0430-0630 and 0930-1130 30 Mar 0430-0630 04 Apr 0430-0630 and 0930-1130 05 Apr 0430-0630 and 0930-1130 06 Apr 0430-0630 and 0930-1130 2. Danger zone bounded by 20-50.85N 087-04.42E, 21-28.11N 088-05.13E, 21-45.58N 087-57.21E, 21-22.50N 086-58.52E, 21-13.70N 086-51.21E. 3. No over flight and shipping permitted in danger zone. 4. Cancel this MSG 061230 UTC Apr 16.

234. Central Andaman Sea. Charts 41 INT 706. MV Polarcus Asima progressing seismic survey till 30 Apr 16 in area bounded by 11-03.3N 096-08.6E, 10-53.0N 096-19.2E, 10-16.0N 095-46.4E, 10-29.5N 095-33.1E.	
2. Wide berth of 06 NM requested.	
3. Cancel NAVAREA VIII 198 218 and this MSG 301830 UTC Apr 16.	
235. Bay of Bengal - off Trincomalee. Charts 32 INT 71. SLFV Lakjaya-02 adrift 09-14 N 081-43E since 27 Mar due engine failure.	
2. Cancel this MSG 311000 UTC Mar 16.	
236. India East Coast – off Balasore. Charts 31 301 351 INT 706. Launch of experimental flight vehicle scheduled from ITR on	
DATE	TIME (UTC)
29 Mar 16	0930-1130
30 Mar	0430-0630 and 0930-1130
04 Apr	0430-0630 and 0930-1130
05 Apr	0430-0630 and 0930-1130
06 Apr	0430-0630 and 0930-1130
2. Danger zone bounded by 20-50.85N 087-04.42E, 21-28.11N 088-05.13E, 21-45.58N 087-57.21E, 21-22.50N 086-58.52E, 21-13.70N 086-51.21E.	
3. No over flight and shipping permitted in danger zone.	
4. Cancel NAVAREA VIII 233 and this MSG 061230 UTC Apr 16.	
237. India West Coast – Arabian Sea. Charts 21 272 INT 71. RV MGS Sagar progressing survey till 10 May 16 in areas bounded by (a) 20-59.67N 068-58.82E, 20-58.70N 065-33.25E, 22-25.57N 067-20.37E, (b) 13-00.68N 072-48.93E, 12-59.78N 072-01.52E, 13-59.67N 072-01.98E, 13-26.92N 072-38.93E, (c) 12-36.88N 074-06.92E, 12-25.73N 074-16.77E, 11-11.01N 074-57.00E, 11-10.95N 074-08.05E.	
2. Wide berth requested.	
3. Cancel this MSG 101830 UTC May 16.	
238. India West Coast – off Jakhau. Charts 202 INT 71. INS Sutlej progressing hydrographic survey till 16 Apr 16 in area bounded by 23-02.8N 068-16.3E, 23-19.9N 068-16.3E, 23-19.9N 068-24.3E, 23-12.8N 068-24.3E, 23-12.8N 068-45.0E, 23-02.8N 068-45.0E.	
2. Wide berth from ship and survey boat requested.	
239. Andaman Sea – Car Nicobar. Charts 407 INT 71. DGPS (09-15N 092-46E) off on 31 Mar from 0230-1230 UTC	
2. Cancel this MSG 311330 UTC Mar 16.	
240. India West Coast (.) Charts 271 292 INT 71. Rig list correct at 301004 UTC Mar 16	
ABAN ICE	22-29.58N 068-07.56E
ABAN III	19-29.98N 071-16.28E
ABAN IV	19-30.93N 071-21.44E
CE THORNTON	19-40.10N 072-18.89E
DISCOVERY-I	19-05.35N 072-06.88E NEW
DYNAMIC VISION	22-18.69N 068-34.46E
DEEP SEA FORTUNE	19-40.14N 072-00.34E
DEEP SEA FOSSIL	19-17.71N 071-24.33E
FG MCCLINTOCK	18-58.31N 071-29.99E
GREAT DRILL CHAAYA	18-38.79N 072-14.94E
GREAT DRILL CHETNA	21-37.38N 068-26.55E
GREAT DRILL CHAARU	20-07.04N 071-49.35E
HARVEY H WARD	18-48.40N 072-20.00E
JINDAL STAR	19-28.40N 071-12.60E
JT ANGEL	22-52.20N 068-28.80E
MERCURY FOCUS	21-18.12N 072-31.64E
NOBLE ED HOLT	19-01.90N 071-32.57E
PARAGON L-786	19-29.88N 071-24.70E
PARAGON M 1161	19-28.98N 071-19.63E
PARAMESWARA	20-04.98N 071-59.67E
RON TAPMEYAR	19-08.72N 072-07.03E
SAGAR GAURAV	20-20.45N 071-15.40E
SAGAR SHAKTI	19-37.86N 071-23.28E
SAGAR JYOTI	19-07.74N 072-02.61E
SAGAR KIRAN	18-44.50N 072-19.63E
SAGAR LAXMI	20-58.00N 071-33.00E
SAGAR PRAGATI	20-58.00N 071-33.00E
SAGAR UDAY	19-06.54N 071-22.35E
TRIDENT II	18-50.59N 072-13.00E
TRIDENT XII	19-31.69N 071-16.51E
VICTORY DRILLER	18-31.95N 072-15.23E
VIRTUE-I	19-26.06N 071-24.26E
VALIANT DRILLER	19-33.13N 071-16.35E
2. Wide berth requested	
3. Cancel NAVAREA VIII 206.	

241.	India West Coast – Mumbai ODA to Gulf of Khambhat. Charts 292 INT 71. MV Flamboyant progressing survey till 30 Apr 16 in areas bounded by (a) 19-42.5N 070-56.5E, 19-39.6N 071-34.5E, 19-02.3N 071-33.8E, 19-05.7N 070-56.1E (b) 18-55.7N 072-09.3E, 18-56.3N 072-21.1E, 18-29.0N 072-24.5E, 18-27.9N 072-12.7E and in vicinity of line joining 19-38.3N, 071-22.8E, 20-12.9N 071-56.4E, 20-42.8N 072-18.2E. 2. Wide berth requested. 3. Cancel NAVAREA VIII 152.
242.	India West Coast – off Quilon. Charts 22 260 INT 71. RV Samudra Shaudhikama progressing survey till 25 Apr 16 in area bounded by 08-55.07N 076-24.84E, 08-55.07N 076-30.04E, 08-45.03N 076-30.04E, 08-45.03N 076-34.99E, 08-39.98N 076-34.99E, 08-39.98N 076-30.34E, 08-49.98N 076-25.02E. 2. Wide berth requested. 3. Cancel this MSG 251830 UTC Apr 16.
243.	India West Coast – Mumbai ODA to Okha. Charts 21 INT 71. SV Fugro mapper progressing survey till 30 Apr 16 in vicinity of 19-31N 071-19E, 19-06N 072-07E, 18-43N 072-13E, 18-44N 072-18E, 19-19N 071-20E, 18-57N 072-10E, 19-15N 071-21E, 18-39N 072-13E, 19-35N 071-19E, 18-55N 072-18E, 18-50N 072-13E, 20-19N 071-48E, 22-25N 068-33E, 19-11N 072-08E, 19-41N 071-25E, 18-48N 070-62E, 19-29N 071-16E, 19-37N 071-19E, 19-39N 071-17E, 19-11N 072-11E. 2. Wide berth requested. 3. Cancel this MSG 301830 UTC Apr 16.
244.	Arabian Sea – Gulf of Khambhat. Charts 2039 INT 71. Perigee Lt vessel (21-42.11N 072-18.00E) relaid. 2. Cancel NAVAREA VIII 145 and this MSG.

SECTION – VI

CORRECTIONS TO SAILING DIRECTIONS (PILOTS)

West coast of India Pilot (INP-1)

Chapter-2 (Page-94)

Article 2.311, para 1,
Delete and replace by

1 vessels approaching from E should use Bodu Kalhi (4°16'.35 N 73°32'.75 E)(2.253), steering for the deep –water fairway lying 6 cables S of Lakanfinolhu, which is marked by a light beacon (lateral) and some 3 cables clear of its reef; thence, the route leads 1½ miles W and 5 miles SSW, then S, through a channel of islets and reefs marked by light beacons (lateral and cardinal) to the anchorage N of Male, passing:

2 S of two shoal patches with least charted depths of 8 m and 7 m (4°17'.14 N 73°32'.21 E) and (4°17'.28 N 73°31'.98 E) respectively, then to:
N then WNW of an unnamed reef which dries (4°15'.90 N 73°32'.00 E); shoal patches extend ½ cable NW and 2 cables S from this reef.

3 ESE of Bandos Maa Gaa (4°15'.70 N 73°30'.50 E),
then to:

WNW of vihamanaafushi (4°13'.61 N 73°31'.19 E)
ESE of Aarah (4°13'.82 N 73°29'.68 E),

The track then continues S, passing:

E of Galu Falhu (4°12'.50 N 73°30'.00 E), then to;
W of Dhoonidhoo (4°11'.82 N 73°30'.83 E), then to;

To the port or designated anchorage N of male.

(Source: BA 09/16)

(07/16)

SECTION – VII

CORRECTIONS TO LIST OF LIGHTS

No	Name & Location	Position (Lat-Long)	Characteristics	Ht. mts	Range miles	Structure & Height (mts)	Remarks
D6900	- Passe Bandrele. Ldg Lts 292.6°. Front *	12 52.58 S 45 13.05E	Q R	21	5	White 8-sided pyramidal tower, red band 8	Intens 284°- 302° (18°)
D6900.1	- - Rear. 273 from Front *	12 52.53S 45 12.91E	Q R	54	5	White 8-sided pyramidal tower, red band 8	Intens 284°- 302° (18°)
D7340.2	Deleted; remove form list						
D7388.561	- Naval base entrance S * *	25 01.37 N 51 38.10 E *	Fl R 5s				
D7388.562	- Naval base entrance N * *	25 01.50 N 51 38.47 E *	Fl G 5s				
F0489	- Umargam	20 11.80 N 72 44.94 E	Fl W 15s	35	19	White concrete tower, red bands 30	<i>fl 1.3.</i> Storm Signals
	- -	..	Racon	ILRS Vol 2 Station 78985
	- -	..	AIS	TD 2016 MMSI No 004192224 *
F0606	- Aguada	15 29.52 N 73 46.36 E	Fl(3)W 20s	85	27	White rectangular concrete tower 22	<i>(fl 0.4, ec 3.5) x 2,</i> <i>fl 0.4, ec 11.8.</i>
	- -	..	Racon	ILRS Vol 2 Station 79010
	- -	..	AIS	TD 2016 MMSI No 004192234 *
F0980	Santhapalli	18 03.95 N 83 38.25 E	Fl(2)W 10s	43	23	White round masonry tower, black bands 22	<i>fl 0.2, ec 2.3, fl 0.2, ec 7.3</i>
	-	..	AIS	TE 2016 MMSI No 004194438 *
F1004.4	Paradip	20 15.32 N 86 39.38 E	Fl(3)W 30s	40	28	White RCC tower, black bands	
	-	..	RC Racon	ILRS Vol 2 Station 79200
	-	..	AIS	TD 2016 MMSI No 004194444 *
F1057	Saint Martin's Island. N end	20 37.94 N 92 19.23 E	Fl(2)W 20s	39	20	Red and white □ on framework tower	
	- -	..	Racon *	ILRS Vol 2 Station79360
F1182.8	- Ko Ma. Summit	07 36.89 N 98 51.97 E	Fl(2)W 8s	78	10	White framework tower 6	<i>fl 0.5, ec 1, fl 0.5, ec 6.</i>
							*
F1566	Pulau Jarak	03 58.62 N 100 05.92 E	Fl(2)W 15s	162	20	White metal framework tower, red bands	TE 2016 *
							*
F1644	Pulau Undan. Summit	02 02.90 N 102 20.10 E	Fl(2)W 15s	53	18	Red 8-sided concrete tower on building 15	Range 10M (T) 2015
			*				*
F1685.48	Deleted; remove from list						

SECTION – VIII
CORRECTION TO LIST OF RADIO SIGNALS

INP 31(1), 2014

(Last correction: Edition No. 04 dated 16 Feb 2016)

NIL

INP 31(2), 2014

(Last correction: Edition No. 03 dated 01 Feb 2016)

RADAR BEACONS

PAGE 26, INDONESIA (Sumatera).

86230 Durian Strait Lt Buoy

Delete entry

(Source: BA 10/16)

(07/16)

INP 31(5), 2011

(Last correction: Edition No. 16 dated 16 Aug 2015)

NIL

INP 31(6), 2012

(Last correction: Edition No. 05 dated 01 Mar 2016)

NIL

SECTION – IX

REPORTING OF NAVIGATIONAL DANGERS

Appeal to all Mariners

1. Mariners at sea whilst on passage, or whilst entering / leaving ports / harbours and other waterways, are requested to look out for new or suspected dangers to navigation, changes in aids to navigation, or corrections to published charts and Sailing Directions. Whenever any such changes / dangers are observed, mariners are requested to notify the same to the Chief Hydrographer to the Government of India at the following address: -

National Hydrographic Office
107-A, Rajpur Road,
Dehradun - 248001
(UTTARAKHAND), INDIA
e-mail: - inho@navy.gov.in, msis-inho@navy.gov.in
Fax No.: +91-135- 2748373
WEB: www.hydrobharat.gov.in

Instructions for filling up IH 102

2. Kindly follow the instructions below in order to help the Hydrographic Office (the recipient) to quickly issue NAVAREA warning / Notice to Mariners for the benefit of all other mariners at sea.

Position Reporting

3. Accurate position or knowledge of position error is of great importance. Latitude and Longitude should only be used to specify position details when they have been fixed by GPS or Astronomical Observations. A full description of the method, equipment, time and datum (WGS 84/ Everest/ Other) used should be given. When position is defined by sextant angles or bearings (true or magnetic to be specified), more than two bearings should be used in order to provide a redundancy check. Distances observed by Radar should be corrected for index errors. Where position is derived after the event, from other observations and/or Dead Reckoning, the methodology of deriving the position should be included.

4. Paper Charts. A copy/tracing of largest scale chart is the best medium for forwarding details, the alterations and additions being shown thereon in red, but adequate details from the chart must be traced in black ink to enable the amendments to be fitted correctly.

5. ENCs. A Screen shot of largest scale usage band ENC with the alterations and additions being shown thereon in red. If it is to report an issue with the display of an ENC, a screen shot of the affected cell should be sent along with details of the ECDIS make and version in use at the time.

Depth Reporting

6. When soundings are obtained using echo sounders, the echo sounding trace should be duly annotated with date, times, position, depths, etc., and forwarded with the IH102. It is important to state whether the echo sounder is set to register depths below the surface or below the keel; in the latter case the vessel's draught should be given. Time and date should be given in order that corrections for the height of the tide may be made where necessary. The make, name and type of echo sounder should also be given.

7. For modern echo sounders that use electronic 'range gating', care should be taken that the correct range scale and appropriate gate width are in use. Older electro-mechanical echo sounders frequently record signals from echoes received back after one or more rotations of the stylus have been completed. Thus with a set whose maximum range is 500m, an echo recorded at 50m may be from depths of 50m, 550m or even 1050m. Soundings recorded beyond the set's nominal range can usually be recognised by the following:

- (a) the trace being weaker than normal for the depth recorded;
- (b) the trace passing through the transmission line;
- (c) the feathery nature of the trace.

As a check that apparently shoal soundings are not due to echoes received beyond the set's nominal range, soundings should be continued until reasonable agreement with charted soundings is reached. However, soundings received after one or more rotations of the stylus can still be useful and should be submitted if they show significant differences from the charted depths. Efforts should be made to identify and negate false echoes if any. The Mariners Handbook (NP100) and Notice 15 Special Edition of Notice to Mariners may be consulted.

8. Reports which cannot be confirmed or are lacking in certain details should not be withheld. Shortcomings should be stressed and any firm expectation of being able to check the information on a succeeding voyage should be notified.

9. Reports of **shoal soundings**, uncharted dangers and aids to navigation out of order should, at the mariner's discretion, also be made by radio to the nearest coast radio station. The draught of modern tankers in such that any uncharted depth under 30 meters or 15 fathoms may be of sufficient importance to justify a radio message.

10. Changes to Port information should be forwarded on Form IH.102A together with form IH.102. Form 102 A contains the information required for Sailing Directions and should be used as an *aide memoir*. The Mariners Handbook, NP100, Chapter 8 gives general instructions. Where there is insufficient space on the forms an additional sheet should be used.

Please Note: - An acknowledgement will be sent by National Hydrographic Office for Hydrographic Notes received. When a Notice to Mariners is issued, the sender's ship or name is quoted as authority unless the information is also received from other authorities/foreign Notices to Mariners. Further communication from National Hydrographic Office to the sender of Hydrographic Notes will only be necessary to verify unusual features or abnormal values reported.

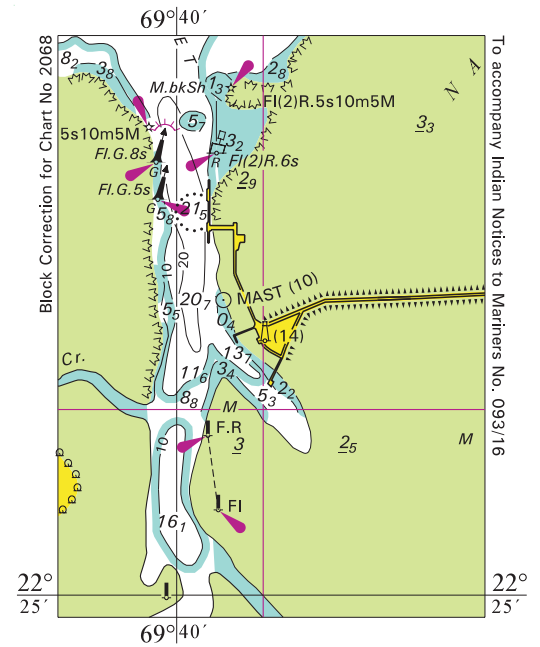
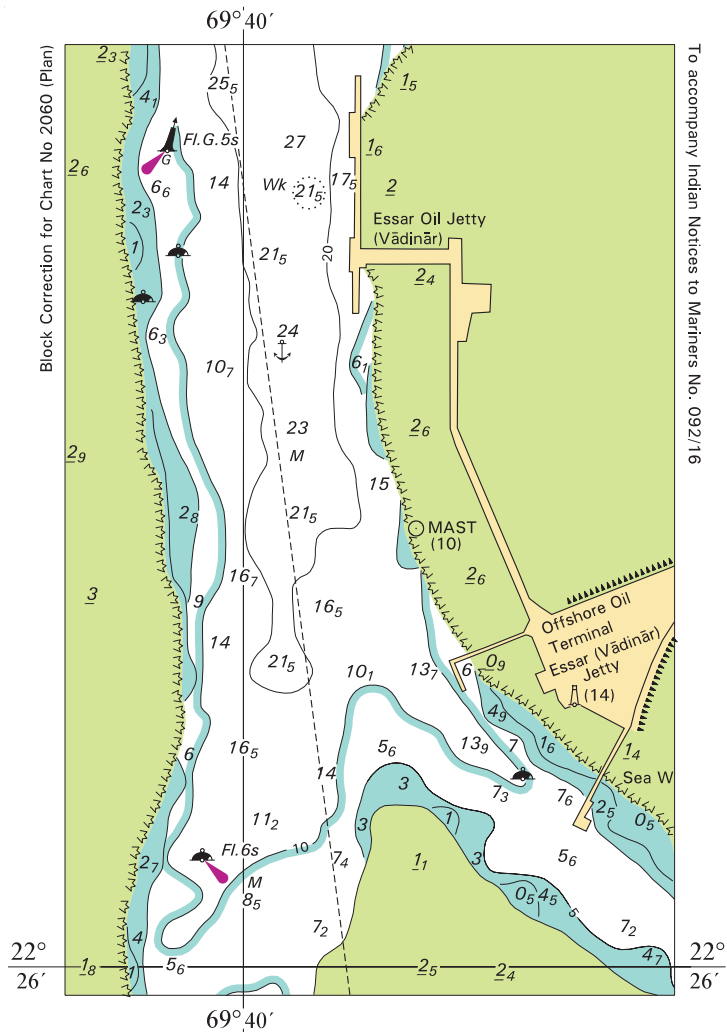
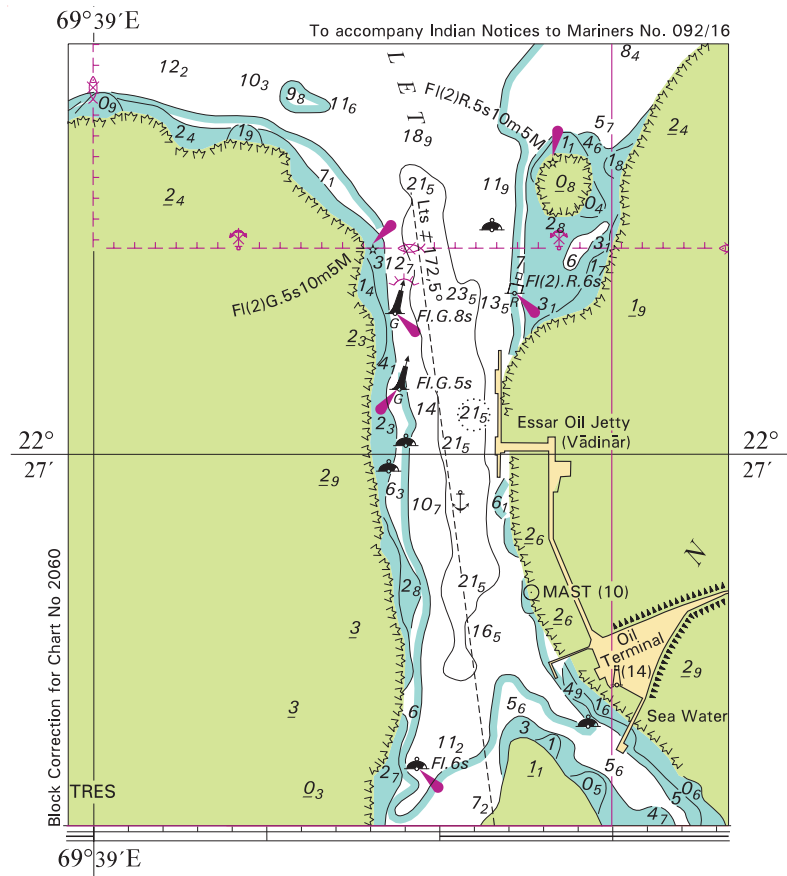


HYDROGRAPHIC NOTE				IH.102 (Revised 2012)	
For Forwarding information for Indian Charts, ENC's and Publications and reporting of ENC related issues					
Date			Ref. Number		
Name of the Ship or Sender					
Address					
Tel/FAX/E-mail address					
Observation Date			Time (UTC/IST)		
Object of Changes Observed (Tick appropriate)	<input type="checkbox"/> Bathymetry	<input type="checkbox"/> Nav. Dangers	<input type="checkbox"/> Nav. aids		
	<input type="checkbox"/> Designated Areas	<input type="checkbox"/> Others			
Geographical Position (See Instructions Overleaf)	Latitude			Longitude	
Position Method	<input type="checkbox"/> DGPS	<input type="checkbox"/> GPS	<input type="checkbox"/> Radar	<input type="checkbox"/> Others	
Datum Used	<input type="checkbox"/> WGS84	<input type="checkbox"/> Everest	<input type="checkbox"/> Others		
Charts Affected				Edition	
Latest Edition of Indian Notices to Mariners Held					
Tracing/Plot/Photograph if enclosed					
ENCs Affected					
Latest Update Disk Held					
Publication Affected				Edition	
Page No./Light No. etc					
Details:					
Limitations if any in Reporting the Changes Above					
Details of Documents/Photos attached:					
Signature of the Master/Reporter/Observer					

HYDROGRAPHIC NOTE FOR PORT INFORMATION (To accompany Form IH.102)				IH.102A (Revised 2012)	
Date				Ref. No.	
Name of the Ship or Sender					
Address					
Tel/Fax/E-mail					
1. NAME OF PORT					
Location		Latitude		Longitude	
2. GENERAL REMARKS					
Principal activities and trade					
Number of ships and tonnage handled per year					
Maximum size of draught of vessel handled					
Copy of Port handbook (if available)					
3. ANCHORAGES					
Type / Purpose					
Minimum depth at anchorage					
Shelter afforded					
Holding ground					
Recommended pilotage to the anchorage					
4. PILOTAGE					
Authority for request					
Embarkation position					
Regulations					
Documents to be provided					
Recommended pilotage to approach of Harbour and Berths					
Information on VTMS					
5. DIRECTIONS					
Entry and Berthing Information					
Tides (Height)					
Tidal Stream Information					
Wind Speed and Direction					
Navigational Aids (Beacons / Buoys / Lights / Etc.)					
6. POLLUTION CONTROL					
Local regulation in force (If Any)					
7. TUGS					
Number available / Tug type					
Maximum HP / Bollard pull					

7. TUGS (Continued)	
Requesting authority	
Availability timing / Communication	
Hiring charges	
8. BERTHING AND WHARVES	
Type & Number of berths available	
Length	
Depth alongside	
Facilities available	
Procedure for requesting berth & hiring charges	
9. CARGO HANDLING	
Containers	
Lighters & Ro-Ro etc.	
10. CRANES	
Brief details of Max. lifting capacity, Height of boom at wharf level and Outreach	
Container handling facilities	
11. BRIDGES	
Vertical clearance	
12. REPAIRS	
Hull machinery and underwater	
Ship and Boat yards	
Docking or Slipway facilities (Size/ Dimensions of vessels handled)	
Hards and Ramps	
Divers / Diving assistance	
13. SERVICES	
Radio / FAX / Telephone / Internet etc.	
Medical	
Quarantine	
Consul	
Ship chandlery and Stevedores	
Compass adjustment	
Tank cleaning	
Hull painting	
Police / Ambulance / Firefighting (Fixed and Mobile facilities)	
Nav. Warning and Weather bulletin	
Garbage disposal / Waste oil disposal	
Helicopter landing facilities	

14. RESCUE & DISTRESS	
Salvage, Lifeboat, Life guards, etc	
15. SUPPLIES	
Fuel (Type, Quantities & Method of delivery)	
Fresh water (Method of delivery and Rate of supply)	
Provisions	
Chart agents	
16. COMMUNICATIONS	
Road, Rail and Air services available	
Nearest airport or airfield	
Port Radio and Information Service (Frequencies and Operating Hours)	
17. PORT AUTHORITY	
Designation, Address, Telephone, E-mail Address and Website	
18. SECURITY	
Security of ports / International Ship and Port Facility Security (ISPS) compliance	
Custom and Immigration Regulations in force	
19. SMALL CRAFT FACILITIES	
Information and facilities for small craft, yachts visiting the port	
Yacht clubs, berths etc	
20. SHORT LEAVE	
21. CLUBS RECREATION	
Information Kiosk (Location)	
Foreign Exchange firms / Banks (Within / Near Port Area)	
Places of interest near port	
22. VIEWS	
Photographs(Duly annotated) of the approaches, leading marks, the entrance to the harbour etc.	
23. ADDITIONAL DETAILS	
Any other information considered to be useful for the mariners	
SIGNATURE OF THE OBSERVER / REPORTER / MASTER	





FOR 24 X 7 SAR ASSISTANCE IN INDIAN SRR

Email: indsar@vsnl.net

NATION WIDE SAR TELE: 1554 (LAND LINE)

INMARSAT C (IOR) 441907210 CODE: 43 (TOLL FREE)

AFTN: VABBYXYC